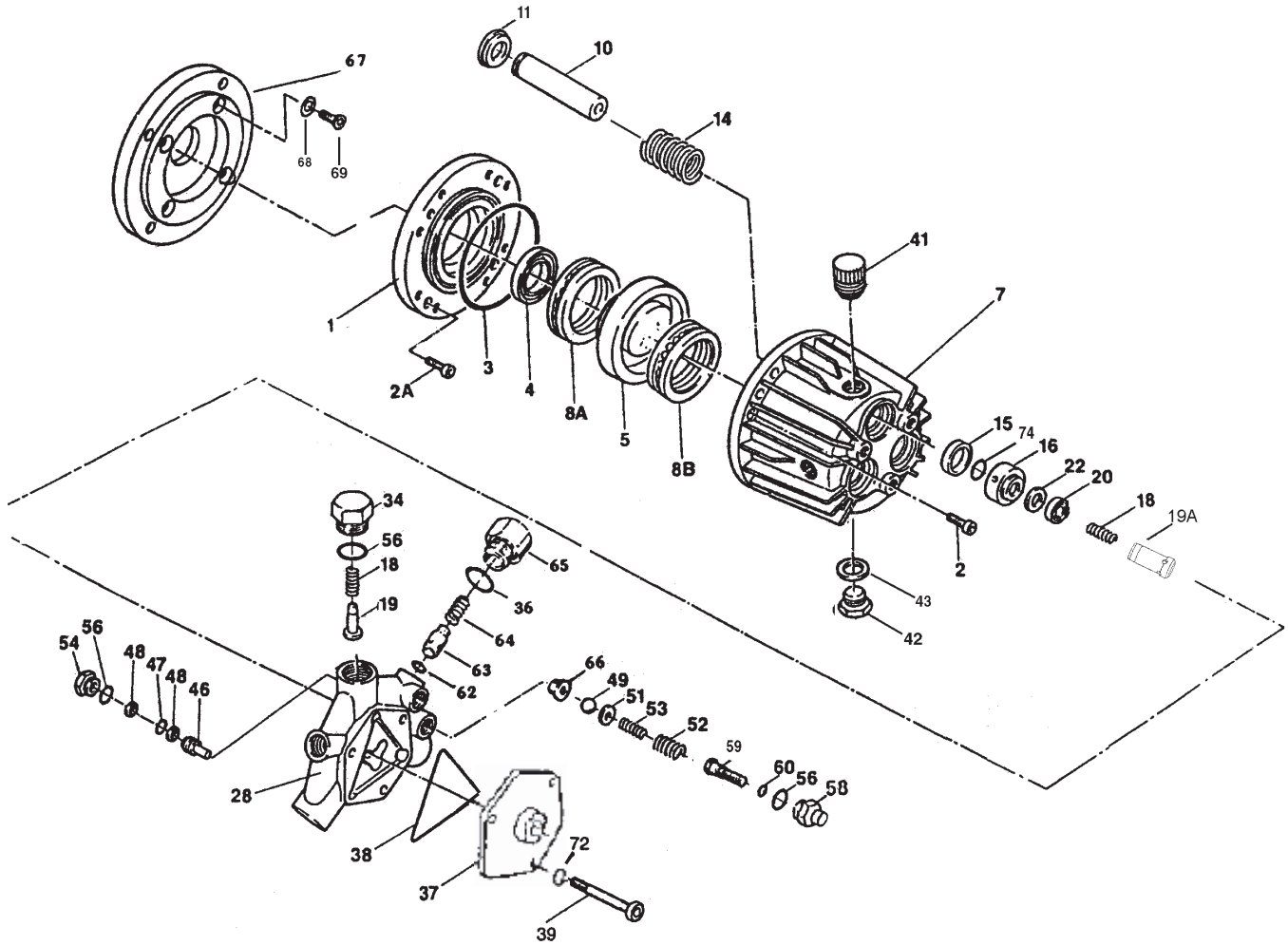


## HR SERIES EXPLODED VIEW



## HR SERIES REPAIR KITS

### Plunger Packing Kit # 09138

| Qty. | Part # | Description   | Key # |
|------|--------|---------------|-------|
| 3    | 08087  | V-Sleeve      | 20    |
| 3    | 07904  | Pressure Ring | 22    |

### Valve Assembly Kit # 09125

| Qty. | Part # | Description         | Key # |
|------|--------|---------------------|-------|
| 6    | 07374  | Valve Spring        | 18    |
| 3    | 07375  | Valve Cone (Outlet) | 19    |
| 3    | 06267  | Valve Cone (Inlet)  | 19A   |

### Oil Seal Kit # 09144

| Qty. | Part #     | Description | Key # |
|------|------------|-------------|-------|
| 3    | 08356-0010 | Oil Seal    | 15    |

### Unloader Repair Kit # 09235

| Qty. | Part #     | Description          | Key # |
|------|------------|----------------------|-------|
| 2    | 12007      | O-Ring, Adapter      | 56    |
| 1    | 12326      | O-Ring               | 62    |
| 2    | 12031-0002 | Back up Ring, Piston | 48    |
| 1    | 06227      | Ball, By Pass Valve  | 49    |
| 1    | 07935A     | Seat, By pass Valve  | 66    |
| 1    | 07913      | O-Ring               | 36    |

### Complete Manifold Kit # 08090

Includes Item Numbers:

18, 19, 20, 28, 34, 36, 38, 46, 47, 48, 49, 51, 52,  
53, 54, 56, 58, 59, 60, 62, 63, 64, 65, 66

## HR SERIES PARTS LIST

| <u>ITEM</u> | <u>PART #</u> | <u>DESCRIPTION</u>                                | <u>QTY.</u> | <u>ITEM</u> | <u>PART #</u> | <u>DESCRIPTION</u>                   | <u>QTY.</u> |
|-------------|---------------|---------------------------------------------------|-------------|-------------|---------------|--------------------------------------|-------------|
| 1           | ###           | Adapting Plate<br>(HR20/HRC20)                    | 1           | 37          | 06229*        | Suction Flange                       | 1           |
| 1           | ###           | Adapting Plate<br>(HR25/HRC25/HR30/HRC30)         | 1           | 38          | 07910A        | O-Ring, Formed                       | 1           |
| 2           | 07881         | Socket Head Cap Screw, 1/4"                       | 8           | 39          | 06200*        | Stud Bolt (HR20/HRC20)               | 3           |
| 2A          | 07435         | Socket Head Cap Screw, 3/8"                       | 4           | 39          | 06228         | Stud Bolt<br>(HR25/HRC25/HR30/HRC30) | 3           |
| 3           | 07344         | O-Ring                                            | 1           | 41          | 08083         | Oil Fill Cap                         | 1           |
| 4           | 07805         | Radial Shaft Seal                                 | 1           | 42          | 06273         | Oil Drain Plug                       | 1           |
| 5           | ***           | Swash Plate (HR20/HRC20)                          | 1           | 43          | 08192         | Gasket                               | 1           |
| 5           | ***           | Swash Plate (HR30/HRC30)                          | 1           | 44          | 08250         | Sight Glass (Optional)               | 1           |
| 7           | @@            | Crankcase                                         | 1           | 46          | 07914B        | Piston                               | 1           |
| 8A          | ###           | Rear Bearing, Complete<br>(HR20/HRC20)            | 1           | 47          | 07937         | O-Ring                               | 1           |
| 8A          | ###           | Rear Bearing, Complete<br>(HR25/HRC25/HR30/HRC30) | 1           | 48          | 12031-0002    | Back up Ring                         | 2           |
| 8B          | ***           | Front Bearing, Complete                           | 1           | 49          | 06227         | Ball, By pass Valve                  | 1           |
| 10          | 08070         | Plunger Assembly,<br>HR20/HR25/HR30               | 3           | 51          | 07917A        | Washer                               | 1           |
| 10          | 08030         | Plunger Assembly, Ceramic<br>HRC20/HRC20/HRC30    | 3           | 52          | 07918         | Adjusting Spring                     | 1           |
| 11          | 06212         | Spring Disc Retainer                              | 3           | 53          | 07919         | Pressure Spring                      | 1           |
| 14          | 07873         | Plunger Spring                                    | 3           | 54          | 06239         | Guide Plug                           | 1           |
| 15          | 08356-0010    | Oil Seal, Viton                                   | 3           | 56          | 12007         | O-Ring                               | 5           |
| 16          | 07899A        | Spacer Ring                                       | 3           | 58          | 07936A        | Adjusting Plug                       | 1           |
| 18          | 07374         | Valve Spring                                      | 6           | 59          | 07938A        | Adjusting Screw                      | 1           |
| 19          | 07375         | Valve Cone (Discharge)                            | 3           | 60          | 07937         | O-Ring                               | 1           |
| 19A         | 06267         | Valve Cone (Inlet)                                | 3           | 62          | 12326         | O-Ring                               | 1           |
| 20          | 08087         | V-Sleeve                                          | 3           | 63          | 12325         | Kick-Back Valve Cone                 | 1           |
| 22          | 07904         | Pressure Ring                                     | 3           | 64          | 12328         | Kick-Back Valve Spring               | 1           |
| 28          | 08065*        | Manifold                                          | 1           | 65          | 12340         | Kick-Back Valve<br>Spring Retainer   | 1           |
| 34          | 07379         | Manifold Plug                                     | 3           | 66          | 07935A        | By Pass Valve Seat                   | 1           |
| 36          | 07913         | O-Ring                                            | 1           | 67          | 07466EX       | Mounting Plate                       | 1           |
|             |               |                                                   |             | 68          | 07468         | Washer                               | 4           |
|             |               |                                                   |             | 69          | 07467         | Bolt                                 | 4           |
|             |               |                                                   |             | 72          | 06224*        | Washer                               | 3           |
|             |               |                                                   |             | 74          | 08573         | O-Ring (Flinger)                     | 3           |

\* HR20/HRC20 pumps manufactured prior to 5/97, require different parts than those listed on this page  
Please call 800-475-5660 for assistance

### Only available as part of the Flange Assembly, part #17001. ( includes key number's 1, 3, 4, 8A )

\*\*\* Only available as part of the Wobble Plate Assembly, part # 17007 for the HRC30 or part # 17009  
for the HR20 ( includes key number's 5, 8B )

@@ To order the crankcase, you would need to send in the old crankcase so we can match it up to the  
new crankcase.

## HR SERIES TORQUE SPECIFICATIONS

| <u>Position</u> | <u>Item#</u> | <u>Description</u>                | <u>Torque Amount (ft.-lbs)</u> |
|-----------------|--------------|-----------------------------------|--------------------------------|
| 2               | 07881A       | Socket Head Cap Screw             | 100 in.-lbs.                   |
| 39              | 06200        | Stud Bolt, 8mm (older style HR20) | 220 in.-lbs.                   |
| 39              | 06270/06228  | Stud Bolt, 10mm                   | 360 in.-lbs.                   |